

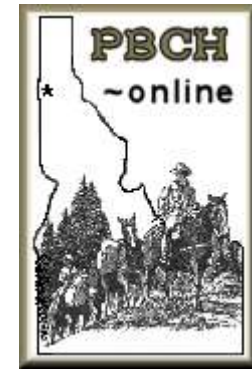
PBCH Newsletter February, 2019

Tails and Trails

Page 1

Issue No. 2

Happy Valentine's Day



A message from President Karen Kimball

We had a good turnout for the End-of-Year Party at Timber. I hope every had a good time, a good dinner and with the auction items that were purchased. I want to thank the fundraising committee for putting the silent auction together and for everyone who donated items. It was a great success.

We will be working on trails to ride and work parties and other events for this year so bring any suggestions to the next couple of meetings.



Horsewoman and Horseman of the Year Julie Volpi and Bob Funke show off their gifts at the Annual End-of-Year Party.

Information Corner

Newsletter Editor Joni Lueck

Email jklhorserider@gmail.com

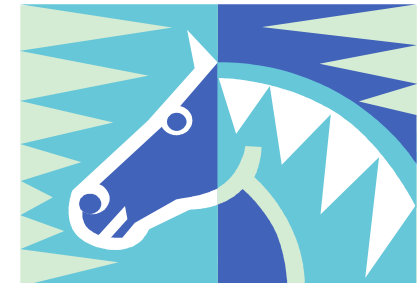
Please go to www.pbch.org and print out 2019 **membership form** and mail in. Please email Susan Purdy, treasurer finegansfarm2@gmail.com with questions. You can also sign up at any ride or event throughout the year! Mail to PBCH, P.O. Box 1903, Hayden, ID 83835. Please send in membership dues!

Calendar of Events

February PBCH Meeting Saturday, February 16.
Socialize 6:30 meeting starts 7 p.m. 6369 4th St. Dalton Gardens City Hall.

March Speaker and monthly meeting, Saturday March 16. Member Susan Walker and her friend Cheri King will present a PowerPoint presentation and speak about large equine rescue and their trip to Paradise, CA to help after a wildfire destroyed much of the town. Speaker starts at 6:30 and business meeting starts at 7 p.m.

March State Convention March 23, 2019. Idaho Falls. "Sharing the Adventure" is the theme. **Photos for the 2020 calendar are due at this time. Please see instructions on page 4 and 5.**



Some ideas for upcoming fun rides this riding season

Nearby In Idaho

Blue Creek Bay
4th of July Recreation Area
Farragut State Park
English Point
Heyburn State Park
Bernard Peak
Marie Creek
Canfield Mountain
Chilco Mountain
Red Ives Ranger Station
Lookout Pass
Pee Wee Creek
McCroskey Park

Nearby In Washington

Antoine Peak
Liberty Lake Horse Park
Mt. Spokane State Park
Escure Ranch and Fish Trap
McKenzie Conservation Area
Riverside State Park
Fishtrap Recreation Area
Columbia Plateau Trail State Park
Slavin Conservation Area
Palisades City Park



COREY DWINELL, LUTCF

Insurance and Financial Services Agent

841 N BOULDER CT # A
POST FALLS, ID 83854
Tel 208.773.3820
Fax 208.457.1594 Licensed in ID & WA
cdwinell@farmersagent.com

Registered Representative, Farmers Financial Solutions, LLC
30801 Agoura Road, Bldg. 1, Agoura Hills, CA 91301-2054
Tel 818.584.0200 Member FINRA & SIPC

16th Annual MPEH Equine Education Day.

February 2, 2019. 9 a.m. to 1 p.m.

At the CenterPlace Event Center in Spokane Valley

The five topics included:

- “So You Wanna Buy a Horse-Prepurchase Exams Revisited.”
- “Equine Respiratory Infections & Antibiotic Usage.”
- “Protecting Your Herd-the Importance of Proper Vaccination.”
- “The status of the wild horses and burros on our public lands.”
- “Dressage and Eventing Horses.”

About 150 people attended this annual event. It was well organized and the speakers were all knowledgeable. The speakers included Dr. Jed McKinlay, Dr. Bob Peters, Dr. Freya Stein, Dr. Roseburg and Dr. Christel Carlson. Coffee and fresh fruit and pastries were available. It was well worth it to attend this free admission event. The sponsors were generous with their door prizes.



(208) 765-8228 • Spokane Toll Free 624-6591
470 Kathleen Avenue • Coeur d'Alene, ID 83815
www.parkertoyota.com

dōTERRA
Wellness Advocate



Arleta Holmes
Wellness Advocate
ID# 3088683
www.mydoterra.com/aholmes

2019 PBCH Officers and board members:

Karen Kimball, president
772-2434;
Arnie Wilkens,
vice-pres. 755-2193;
Julie Volpi, secretary
805-674-6807 ;
and **Susan Purdy, treasurer,**
772-4210.

Board members: Bob Funke
660-7919;

Bill Clarke 687-1968;
Ray Heilman 660-2907; and
Jill Graham, 660-5549.

Jerry Shriner, public lands
coordinator.
Joni Lueck, newsletter editor,
659-9066.

Jill Graham, trail committee
chair email
kooy04@gmail.com

McKINLAY & PETERS
EQUINE HOSPITAL

Bob Peters, DVM
(509) 928-MPEH
www.mckinlaypetersequine.com

April M. Linscott
Attorney

208 762-0203
208 762-0303 fax
alinscott@omllaw.com



8596 N. Wayne Drive, Suite A
Hayden, Idaho 83835

Jamie Duman, P.C.
Certified Public Accountant "Personalized Professional Service"

Jamie Duman, CPA

e-mail: jamie@jamiedumancpa.com

8245 N. Cornerstone
Hayden, ID 83835

Phone (208) 762-5728
Fax (208) 762-9438

DAVE LOGUE
President



FAA Repair Station #LOGR640X

Specializing In Fiberglass Aircraft Parts

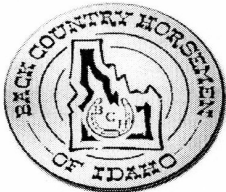
email: selkirkav@selkirk-aviation.com
www.selkirk-aviation.com

(208) 664-9589
Voice Mail 1-800-891-7687

3377 W. Industrial Loop
Coeur d'Alene, ID 83815

JONI LUECK
Vice-President

Your business card could go here each month for \$30 for non-members and \$10 for members. Now this is a yearly price; not a monthly price. What a great deal! Also the business card is put on the website www.pbch.org This is a fundraiser for the chapter!



www.BCHI.org

BCHI CALENDAR CALL FOR PHOTOS

Photo criteria

Must be of BCHI members, take by a BCHI member or taken for BCHI (such as a newspaper)

Can be taken in any state and the cover photo will be selected from Idaho submissions.

Must have a horse/mule in the shot.

Or be a work project with members wearing safety gear:

(hard hat, safety glasses/goggles, gloves, chainsaw chaps).

Heads and faces preferred over tails and backs.

Kids photos welcome: If using saws they must have safety gear on.

Do not resubmit photos that have been used in previous calendars.

Photos are placed by seasons - winter, spring, summer and fall.

Winter photos: can have non-equine shots that show the effects of cold and snow.

Please submit as many photos you wish from your chapter on a CD, DVD or USB drive. NO PRINTS.

USB drives will be mailed back to you. If you want your CD/DVD back please let me know.

Photos need to be in JPEG Format. Set your digital cameras to the highest size settings possible.

Please do not resubmit photos that have been used in previous calendars.

PHOTOS ARE DUE AT THE BCHI CONVENTION.

If you only have a few photos or no way to burn them to CD or a USB drive, you can e-mail them directly to me. USB drives will be returned after calendar is printed.

Thanks for your help and submissions,

Debbie Samovar, 9176 E Soaring Hawk Ln, Saint Maries, ID 83861, 208-245-3041, dsamovar@gmail.com

